

APPLICATION:

PRODUCT NAME:
SS FAUCET BD

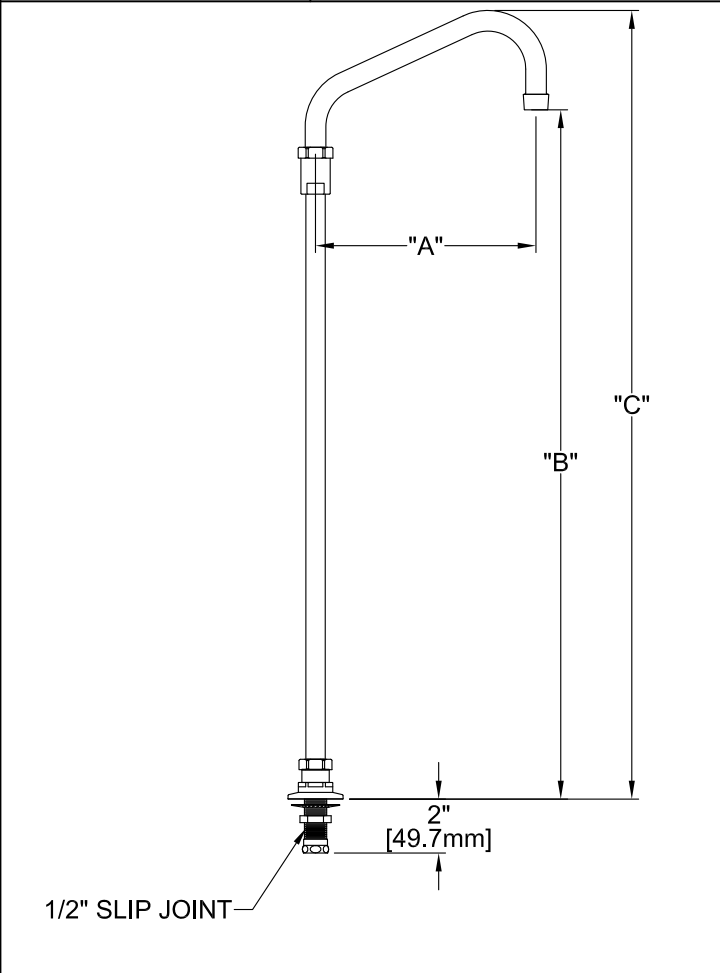
JOB NAME:

MODEL:

QUANTITY:

ITEM NO.:

- 10618 SS FAUCET BD 06SS 21R PER 5.00 GPM
- 10626 SS FAUCET BD 08SS 21R PER 5.00 GPM
- 10634 SS FAUCET BD 10SS 21R PER 5.00 GPM
- 10642 SS FAUCET BD 12SS 21R PER 5.00 GPM
- 10650 SS FAUCET BD 14SS 21R PER 5.00 GPM
- 10669 SS FAUCET BD 16SS 21R PER 5.00 GPM



OPTIONS OR MODIFICATIONS:

OTHER _____

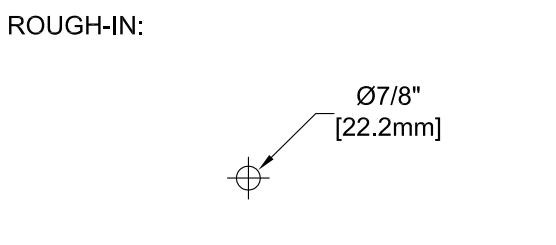
- FEATURES**
- * SINGLE DECK RIGID BASE
 - * 1/2" MALE INLET
 - * 1/2" SLIP JOINT
- SYSTEM LIMITS**
- * TEMP: 40°F MIN. TO 160°F MAX.
 - * PRESSURE 200 PSI MAX. STATIC
 - * 5.0 GPM AT 80 PSI

SHIPPING WEIGHT

- * 5.0 LBS

- PRODUCT COMPLIANCE:**
- * ASME A112.18.1 / CSA B125.1
 - * NSF 61 - Section 9
 - * NSF 372 (Low Lead Content)

MODEL	DIM "A"	DIM "B"	DIM "C"
10618	6" [152mm]	23" [584MM]	26-5/8" [676MM]
10626	8" [203mm]	23-1/4" [590MM]	27-1/8" [689MM]
10634	10" [254mm]	23-7/8" [606MM]	27-5/8" [701MM]
10642	12" [304mm]	24-1/2" [622MM]	28-1/8" [714MM]
10650	14" [355mm]	25-1/8" [638MM]	29" [736MM]
10669	16" [406mm]	25-7/8" [657MM]	29-5/8" [752MM]



FISHER MANUFACTURING COMPANY
TOLL FREE: 800-421-6162 - FAX: 800-832-8238
information@fisher-mfg.com - www.fisher-mfg.com